

# PANGEA™

A U D I O

## HP-201 HEADPHONE AMPLIFIER



### User's Guide

Before using your headphone amplifier, please read this User's Guide thoroughly and keep it for future reference.

## Contents

Safety Instructions	3
Front and Rear Panels	5
USB Set-up	6-7
Analog and Digital Inputs	8
Troubleshooting	9
Package Contents	10
Specifications	10
CE Compliance Statement	11
Product Disposal Instructions	11

## Safety Instructions

### IMPORTANT

Please read these safety instructions prior to setting up and operating the unit.

### Safety Instructions

1. Do not remove the vacuum tube covers.
2. Do not touch the tubes unless you are replacing them. The oil from your skin may damage them. When replacing the tubes, make sure the unit is switched off.
3. Do not touch the tubes when the unit is switched on, as they may be hot.
4. The unit should be kept away from moisture and should not be used near water.
5. The unit should be situated so that its location does not interfere with its proper ventilation. Items such as bookcases or cabinets may impede the flow of air through the ventilation openings.
6. The unit should be situated away from heat sources such as radiators, stoves, or other apparatuses that produce heat. Do not place the unit near open flame sources, such as fireplaces or candles.
7. The unit should be connected to a power supply as described in the User's Guide or as marked on the unit.
8. Power cords should be routed so that they are not likely to be stepped on or pinched by items placed upon or against them.
9. The power cord of the unit should be unplugged from the wall outlet if the unit is left unused for long periods of time.
10. There is a possibility that condensation will form on the surface of the tubes when the unit is moved from a cool place to a warm place. In these circumstances, please wait at least one hour to operate the unit to avoid leakage or damage to a tube.
11. The unit should be serviced by qualified service personnel when:
  - A. The power supply cord or plug has been damaged; or
  - B. Objects have fallen, or liquid has spilled into the unit; or
  - C. The unit has been exposed to water or moisture; or
  - D. The unit does not appear to operate normally or exhibits a marked change in performance; or
  - E. The unit has been dropped.

**Do not attempt to service the unit beyond the actions described in this User's Guide.**



The lightning flash with arrowhead, within an equilateral triangle, is intended to alert the user to the presence of un-insulated “dangerous voltage” within the product’s enclosure that may be of sufficient magnitude to constitute a risk of electric shock.



The exclamation point within an equilateral triangle is intended to alert the user to the presence of important operating and maintenance instructions in the literature accompanying the unit.

To prevent the risk of electrical shock, do not remove cover or back. Refer servicing to qualified service personnel.

- To ensure the optimum performance, please read the user’s guide carefully. Keep the user’s guide in a safe place for future reference.
- Install your unit in a cool, dry, clean place away from windows or other heat sources. To prevent fire or electrical shock, do not expose to rain or water.
- Do not operate the unit upside down. It may overheat, possibly causing damage.
- Never open the amplifier case. If a foreign object drops inside the case, please contact your authorized dealer.
- Do not use force on switches, knobs, or cords. When moving the unit, first turn off the unit, then gently disconnect the power plug and the cords connecting to other equipment. Never pull the cord itself.
- To prevent damage, disconnect the AC power cable cord from the wall outlet during lightning storms.
- Disconnect the AC power plug from the wall outlet when the unit will not be used for an extended period of time.
- Be sure to read the troubleshooting section on common operating errors before concluding that your unit is faulty.
- Ventilation of the amplifier should not be impeded by covering the ventilation openings with items such as newspapers, tablecloths, curtains, etc.
- Exposed flame sources, such as lighted candles, must not be placed on the amplifier.
- The amplifier must not be exposed to dripping or splashing and objects filled with liquids, such as vases, must not be placed on top of it.
- The AC plug is used as the primary disconnect device, therefore the AC power outlet must remain readily accessible.

## Front and Rear Panels



- |                          |                        |
|--------------------------|------------------------|
| 1. Pre Output            | 5. On/Off Power Switch |
| 2. RCA Input             | 6. Headphone Jack      |
| 3. USB Input PC/MAC      | 7. Volume Control      |
| 4. IEC Power Jack / Fuse | 8. Input Selection     |

## USB Set-up

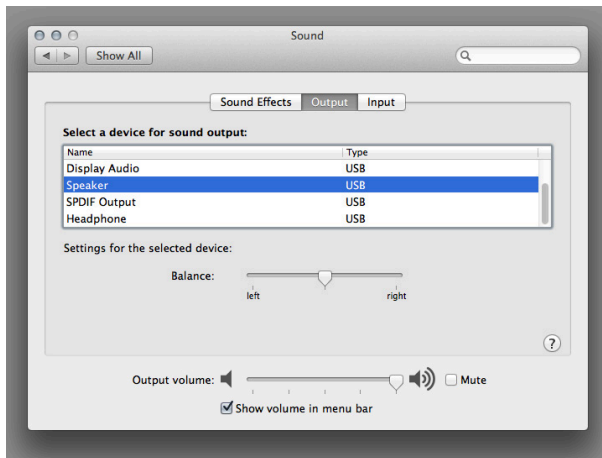
### Windows and Mac: Connect the HP-201 to Your Computer



Set the input to USB using the front panel toggle switch

Connect a USB cable from your computer to the HP-201 USB input port

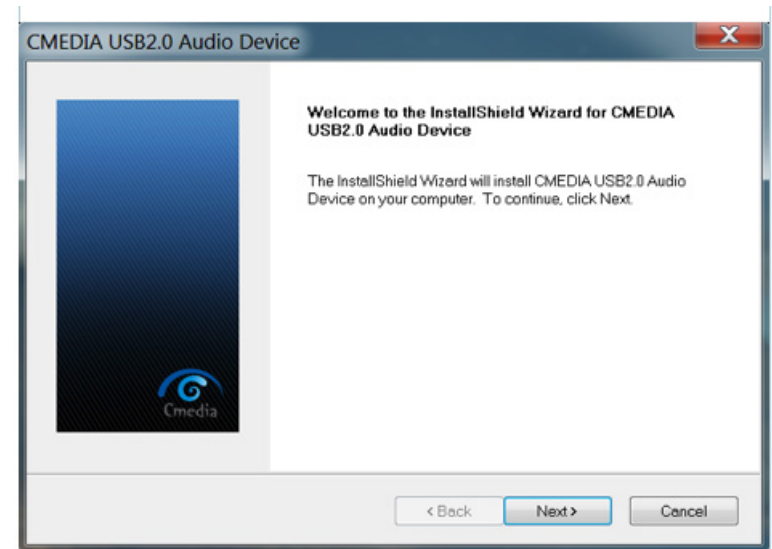
### Mac: Set Speaker to USB in System Preferences



Go to System Preferences, Click on Sound, and set Speaker to USB. Set the volume control to Maximum. You may also need to adjust the volume in your music player software, such as iTunes. Then use the front panel volume control of the HP-201 to turn the volume up or down to your headphones.

## USB Set-up

### Windows Only: Download Driver



Windows computer users need to download the driver for the HP-201 from the Pangea Audio website. Go to [www.PangeaAudio.com](http://www.PangeaAudio.com) and click the Support link at the top of the page.

After downloading the file, unzip it.

Inside the unzipped folder, you will find a Setup.exe file. Run the file and follow the instructions when the software opens.

After installation of the driver, for Windows 7.8 you still need to go to Control Panel>Sound, and then select USB2.0 High-Speed True Audio C-Media Inc. and select "Use this device (enable)" and click OK. This needs to be set as the default device.

No driver is required for Mac computers.

## Analog and Digital Inputs



The HP-201 gives you several connection options.

### OPTION A – Headphone Amp

Set the input to AUX in the front panel. Connect an RCA cable from the analog output of your CD player, computer, or other source component to the AUX input of the HP-201. Plug your headphones into the front panel jack and use the HP-201 as a headphone amplifier.

### OPTION B – Headphone Amp with Amplifier/Receiver

Connect the output of a CD player or other source component to the input of a stereo amplifier or receiver. Set the input to AUX in the front panel on the HP-201. Connect the analog line output of your stereo amplifier or receiver to the AUX input of the HP-201. Plug your headphones into the front panel jack and use the HP-201 as a headphone amplifier. (You may also connect the the output of a tape deck to the input of the stereo amplifier or receiver and the output of the HP-201 to the input of the tape deck.)

### OPTION C – Preamp with Amplifier/Receiver

Set the input to AUX in the front panel. Connect an RCA cable from the analog output of your CD player, computer, or other source component to the AUX input of the HP-201. Connect the analog PRE OUT output to the input of your stereo amplifier or receiver.

### OPTION D – USB Digital Connection

Set the input to USB in the front panel. Connect the USB cable from your computer to the USB input of the HP-201.

The USB input of the HP-201 is compatible with:

- Windows 98SE, ME, 2000 Professional, XP Home/Professional, Vista.\*
- Mac OS 9.1 or later, Mac OS X 10.0 or later

\*Note for Windows users: once you plug in the HP-201, your computer will use “Onkyo-GX-RSU Speakers” as the default sound card.

## Troubleshooting

If the unit fails to operate properly, please check the following points to determine if the fault can be corrected. If the fault cannot be corrected, please disconnect the power cord and contact your authorized Pangea dealer.

Problem	Possible Cause	Solution
No Power	Power cord is not plugged in or is not firmly connected	Plug in power cord firmly
No Sound	Incorrect input selection	Set the Input Selector to match the input being used
	Input source volume is low	Increase the volume level of the input source
	No volume or low volume	Turn the volume control clockwise to increase the system volume level
	The speakers are not properly connected to the amplifier	Connect the speakers properly
	There could be a problem with your audio source	Try a different audio source
	Application software is improperly configured	Make sure that the application software (e.g., Winamp, iTunes) has been properly configured to use USB audio device as its audio
Distorted Sound	Volume level of the system is set too high	Decrease the volume level
	Sound source is distorted	WAV and MIDI files are often of poor quality, so distortion and noise are readily apparent with high-powered speakers. Try a different audio source, such as a CD player

## Package Contents

---

Pangea Audio HP-201 Headphone Amplifier  
USB Cable  
User's Guide

## Specifications

---

Vacuum tube: 12AX7  
Power output: 500 mW x 2 @ 100 Ohms  
THD: <0.1% @ 100 Ohm, 1 kHz, 300 mW  
Headphone impedance: 30-300 Ohm  
Input sensitivity: 750 mV  
Signal-to-noise ratio: 88 dB

## Compliance Statement

---

This product had been subject to the testing requirements for the CE mark, and has been approved to claim the CE mark for the standards.

EN 55013:2001 + A1:2003  
EN 55020:2002 + A1:2003 + A2:2005  
EN 61000-3-2:2000 + A2:2005  
EN 61000-3-3:1995 + A1:2001 + A2:2005  
EN 60065:2002

The validity of the CE mark is restricted to those countries where it is legally enforced.

## Product Disposal Instructions (EU)

---

The symbol shown on the product means that the product is classed as Electrical or Electronic Equipment and should not be disposed with other household or commercial waste at the end of its working life.

The Waste Electrical and Electronic Equipment (WEEE) Directive (2002/96/EC) has been put in place to recycle products using best available recovery and recycling techniques to minimize the impact on the environment, treat any hazardous substances and avoid the increase of landfill.

When you have no further use for this product, please dispose of it using your local authority's recycling processes. For more information please contact your local authority or the retailer where the product was purchased.

**PANGEA™**  
A U D I O

<http://www.wsdistributing.com>